



**Homes and  
Community Renewal**  
#FairHousingMattersNY

# Adams Street - Infill Initiative New Single Family Homes



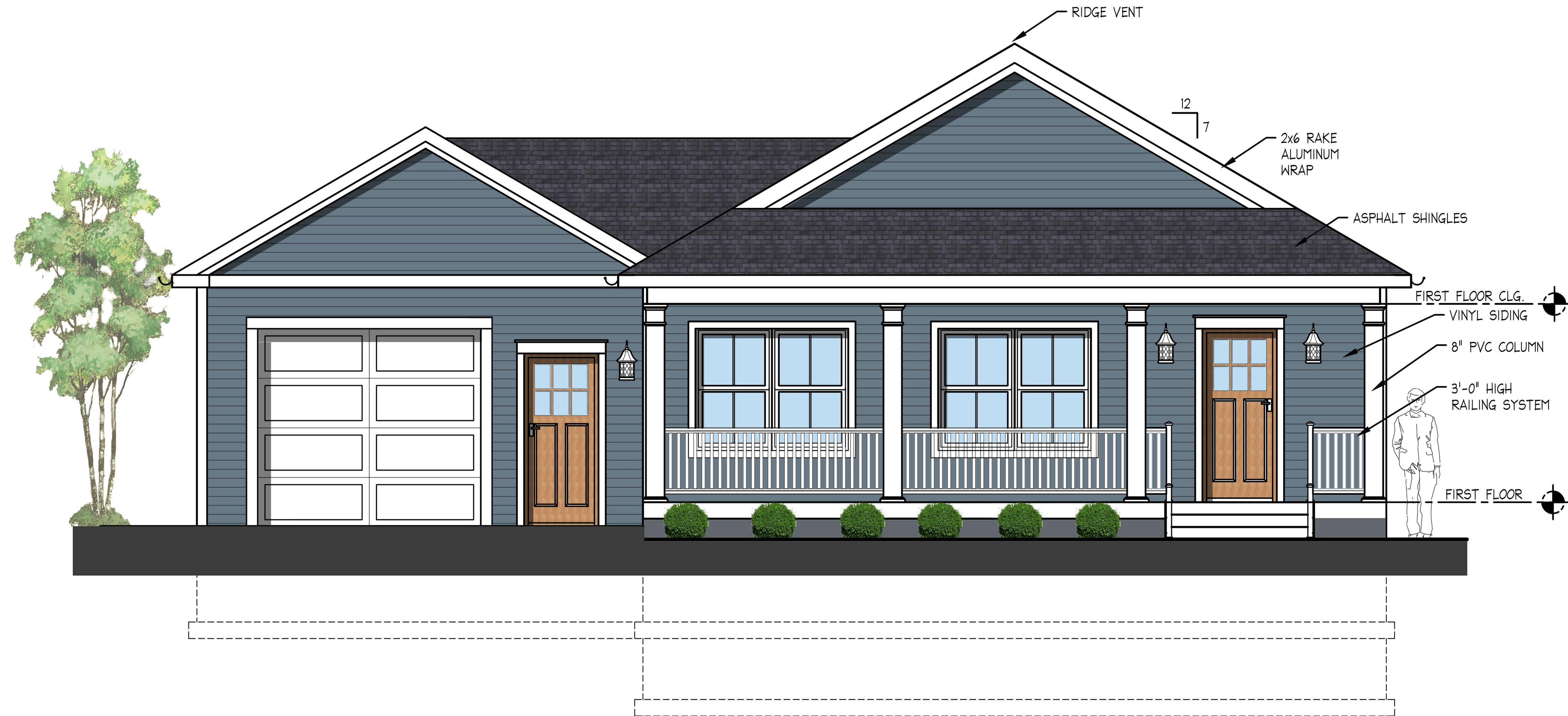
Single Story 1,320 sq ft.  
3 Bedroom  
1.5 Bathrooms  
Covered Entry Porch  
Unfinished Basement  
Attached Garage

Vinyl siding and soffit  
Asphalt roof shingles  
Double pane windows  
Aluminum gutters



First Floor Plan

1/4"=1'-0"



Front Exterior Elevation

1/4"=1'-0"

